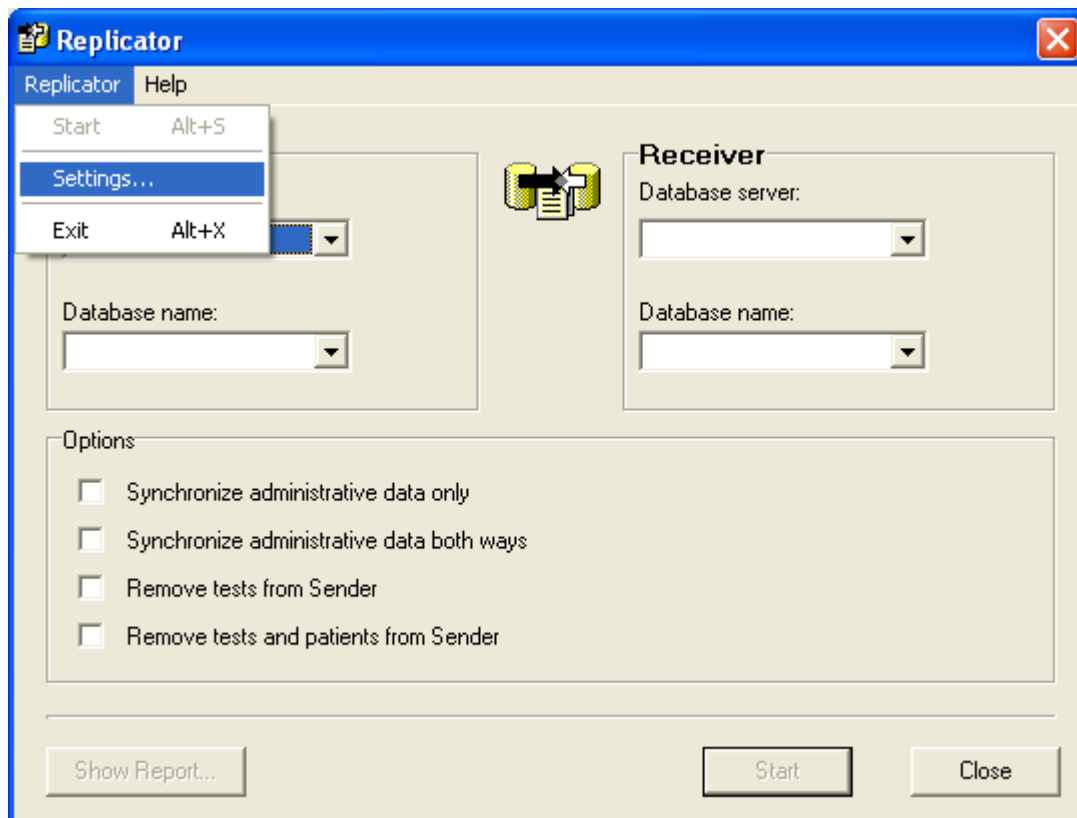
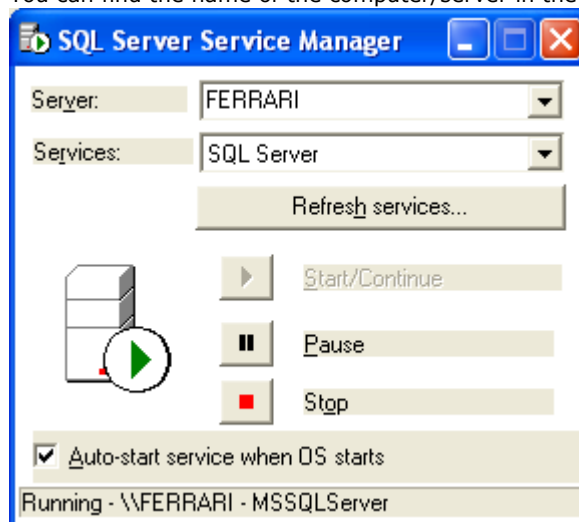


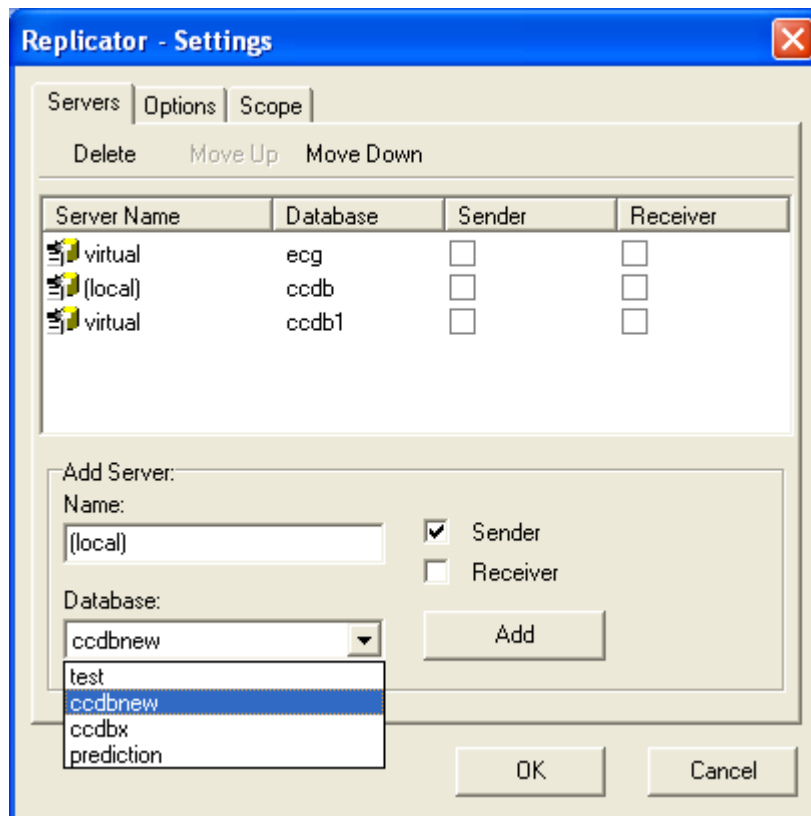
- Start -> All programs -> Welch Allyn -> Replicator tool and Select *Replicator* -> *Settings*



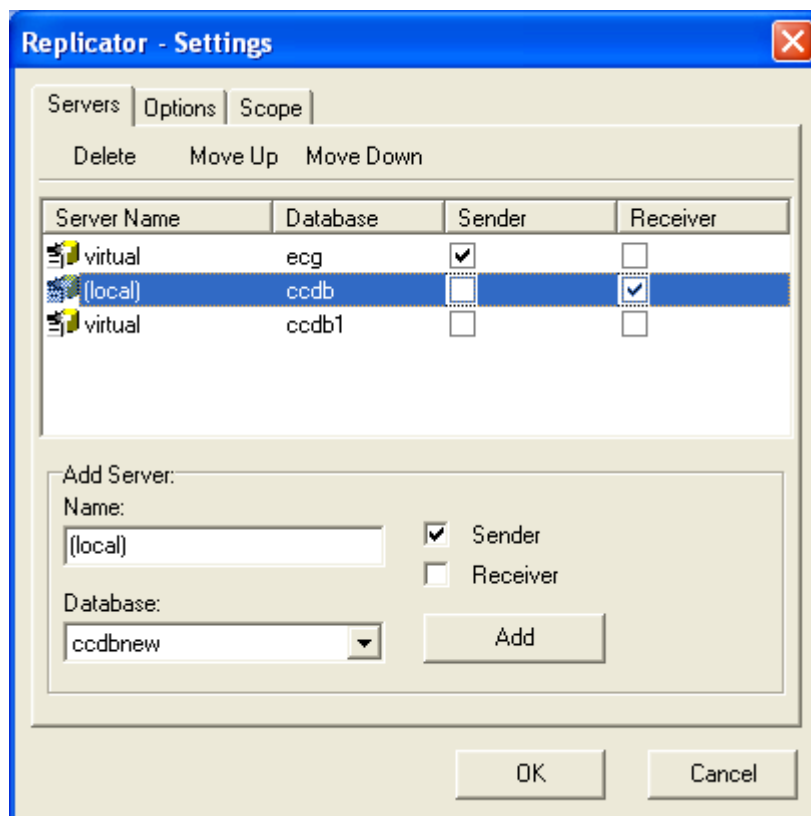
- Type in the name of the server:
 - You can use **(local)** if the database is locally on the computer
 - You can find the name of the computer/server in the SQL Server Service Manager



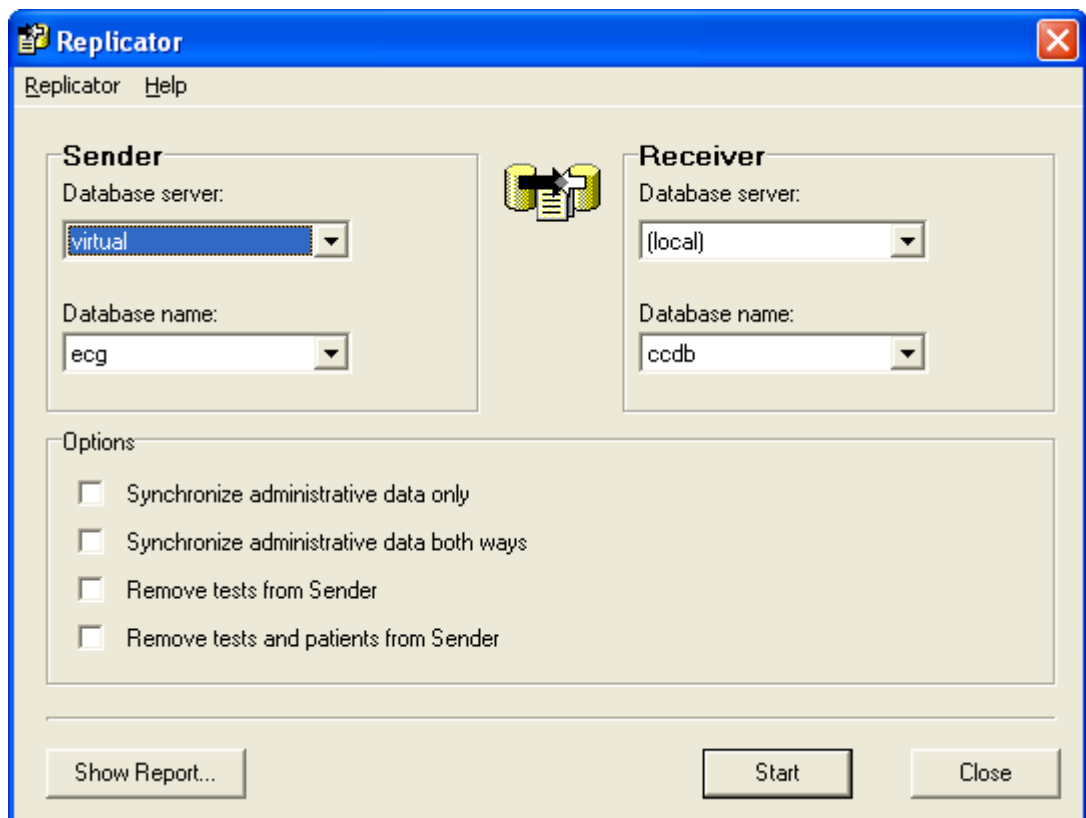
- o Select a database with the drop down key



- o Select if it is a **Sender** or an **Receiver**
- o Select the option **Add**



- Select the option **OK** when you added a Sender and Receiver
- Select the Sender and Receiver from the list



- Select the option **Start** the replication will now start

- In the **replicator -> Settings -> options** you can set more options

